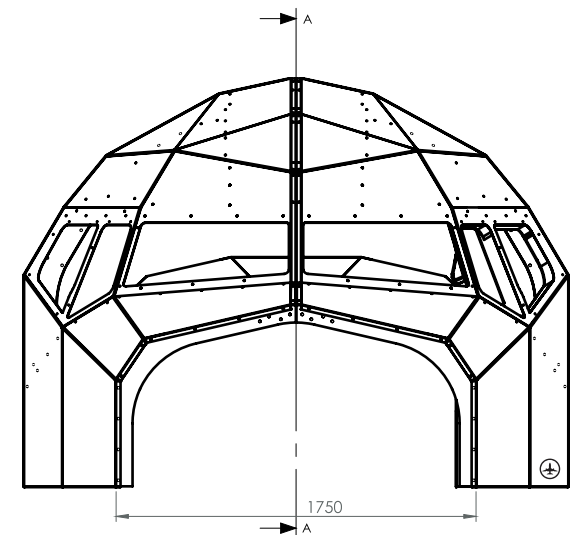
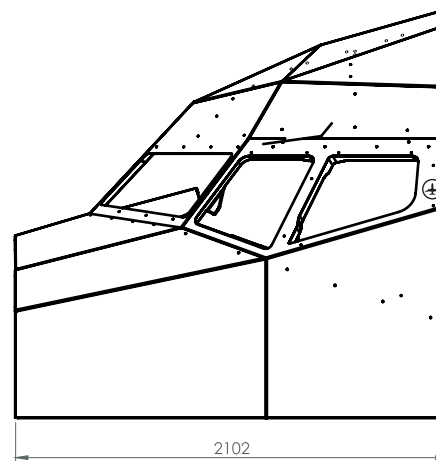
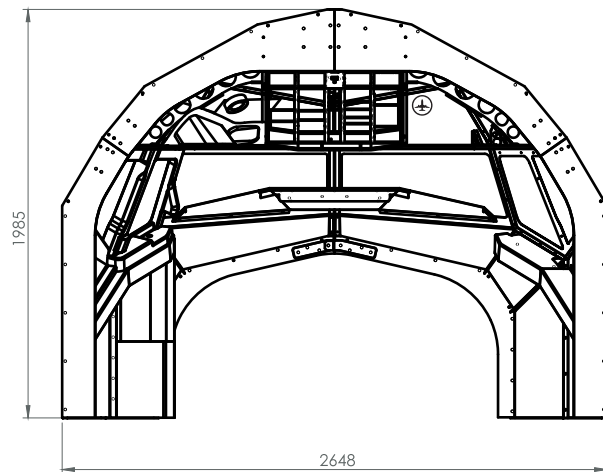


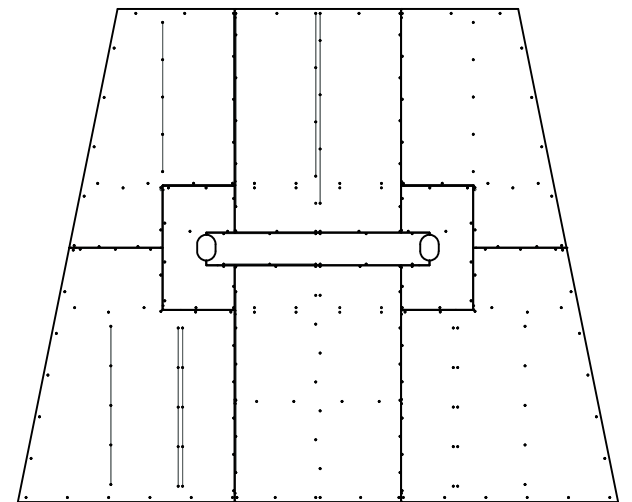
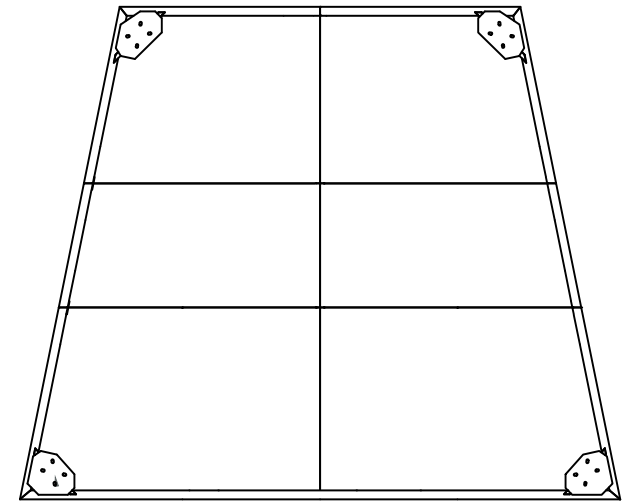
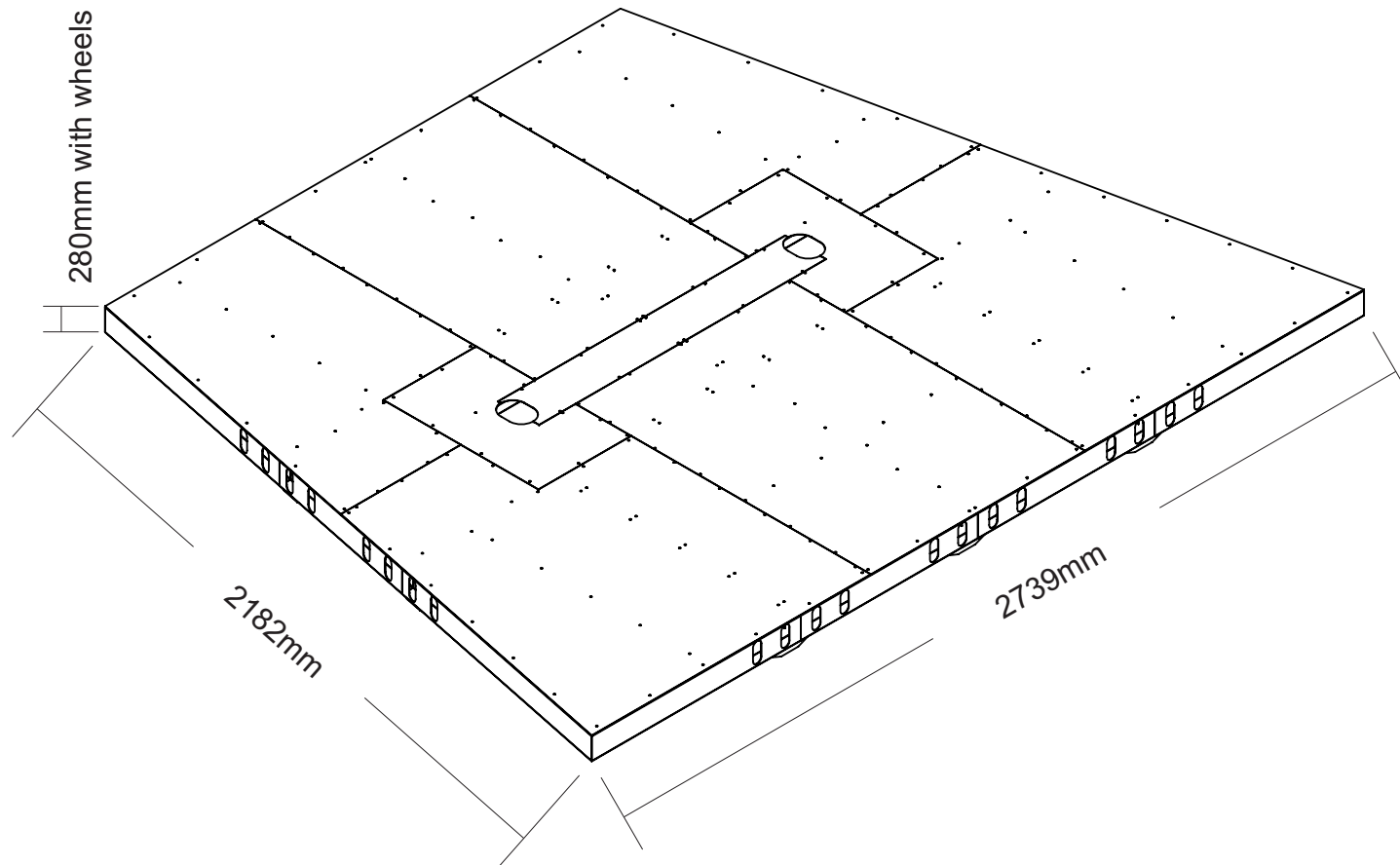


**B737 Shell
dimensions
&
assembly manual.**

B737 Shell dimensions and views.

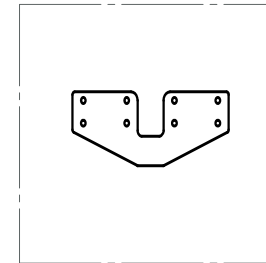
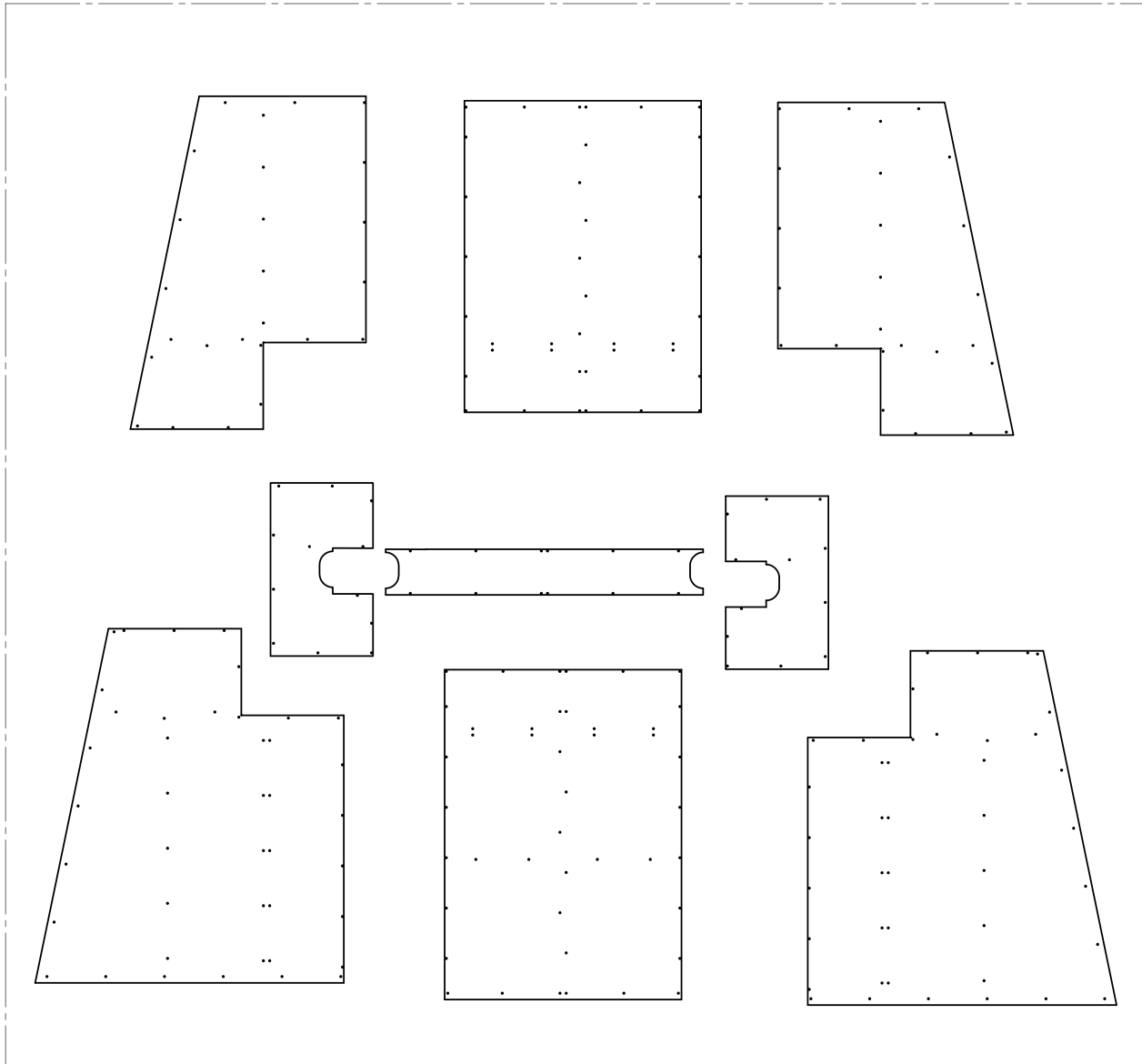


Platform dimensions and views.

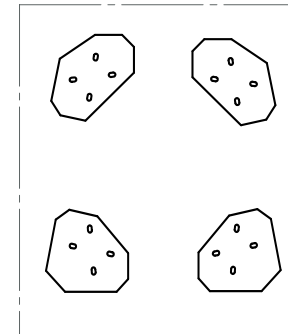


Platform components: floor and reinforcement plates.

Floor: Galvanized steel thin sheets

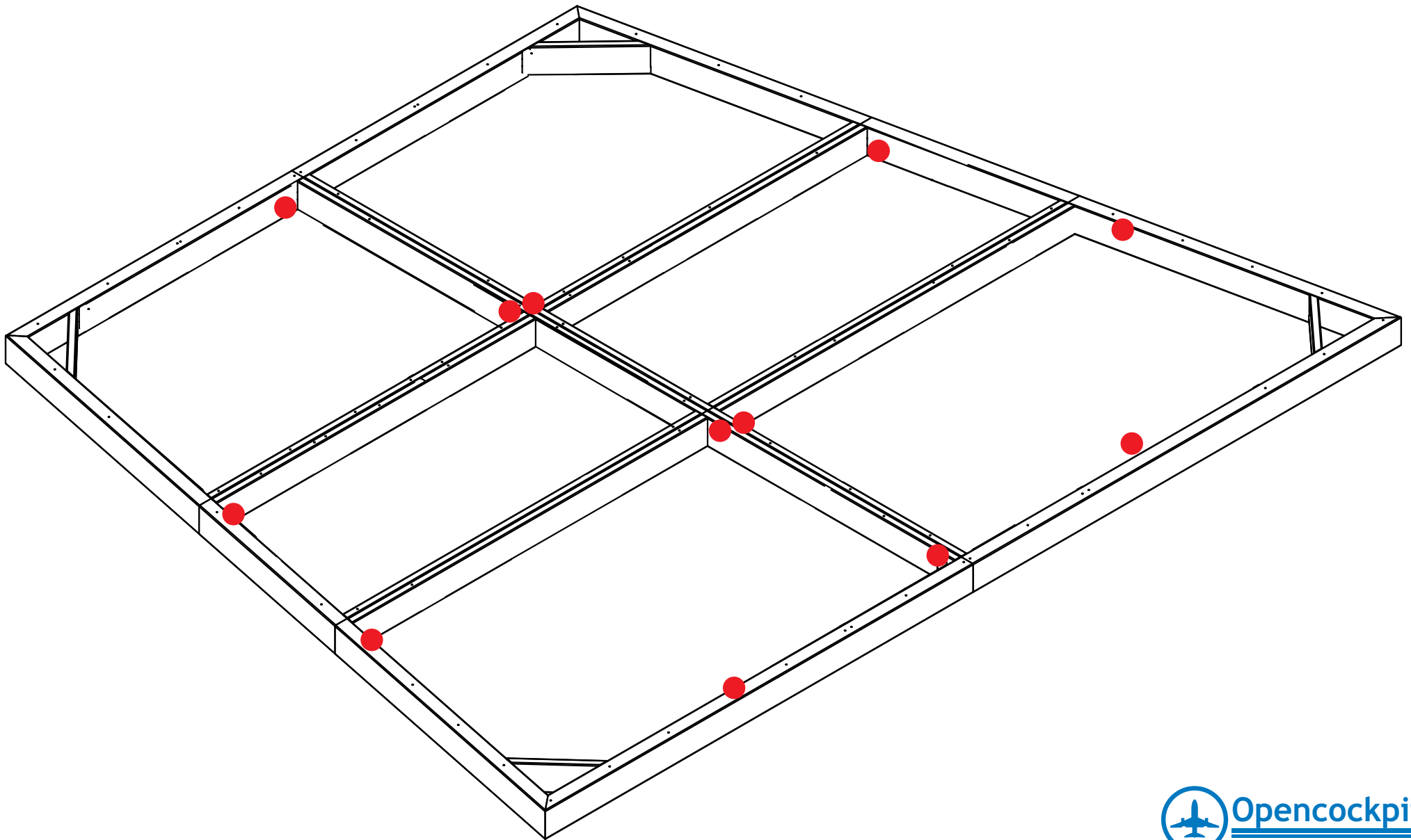


Reinforcement brackets in
structure joints.
12 Units.



Wheel attachments.
4 Units.

Platform assembly and reinforcements.



Structure with panels.



Assembly procedure 1/9.

1°. Assembly the platform with wheels and reinforcements.

2°. Set the floor sheets on the platform but fix only a few screws inside, let the perimeter without fixing screws.



3°. Start assembling the side walls and archs.
Now the walls and floor perimeter can be fixed to the platform.



Assembly procedure 2/9.

4°. Continues assembling walls from down to up.



8°. Main ribs.



5°. Is very important to not tight the screws for future adjustments.

6°. Close the structure with all black panels, adjust the joints and then you can tight the screws.

7°. Now proceed with internal ribs.

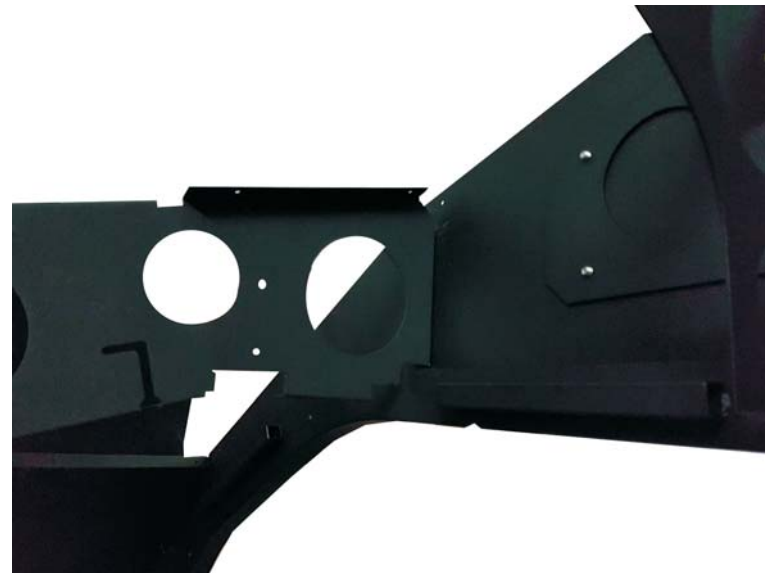


Assembly procedure 3/9.

9°. Install the main rib into the structure.



10°. Proceed with drilled ribs for overhead fixing.



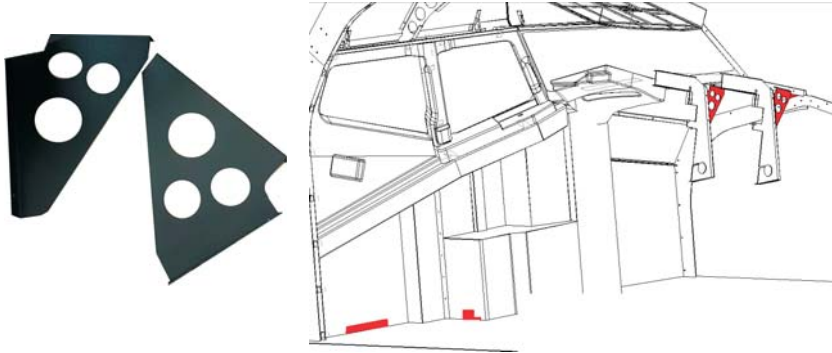
Assembly procedure 4/9.

11°. Continue with overhead ribs.

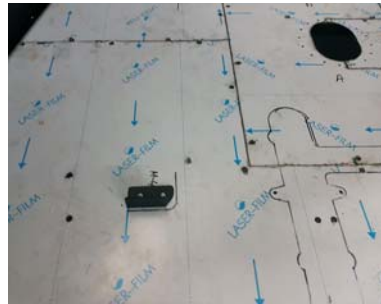


Assembly procedure 5/9.

12°. Proceed with MIP ribs and inside walls.



13°. Install inside white walls and main grey spar. White walls are fixed with small plates coloured in red in previous image.



Assembly procedure 6/9.

14°. Both inside walls and window frames can be fixed. Upper closures can be fixed too, but is not recommendable because the overheads are not fixed yet.



15°. Is recommended to install the steering tiller before installing MIP structure.

Assembly procedure 7/9.

16°. Next step is fix the MIP.

Is highly recommended to fix the MIP with all components fixed on it.



Assembly procedure 8/9.

17°. Now is time for fixing pedals and after them, the linked Yokes.



18°. After fixing pedals and yokes proceed with wiring for overheads and fix both.

- a) Fix wiring first and after that, fix FWD overhead.
- b) Fix AFT overhead the last.



Caution!: Use washers to avoid overhead drop.



Assembly procedure 9/9.

19°. After fixing both overheads, upper closures can be fixed.



21°. See if paint corrections are needed, remove soil protection and fix the seats on place.



20°. Next step is fix the J-Rails, holes are pre-drilled. Throttle Quadrant and Pedestal can be fixed too (these not predilled).

